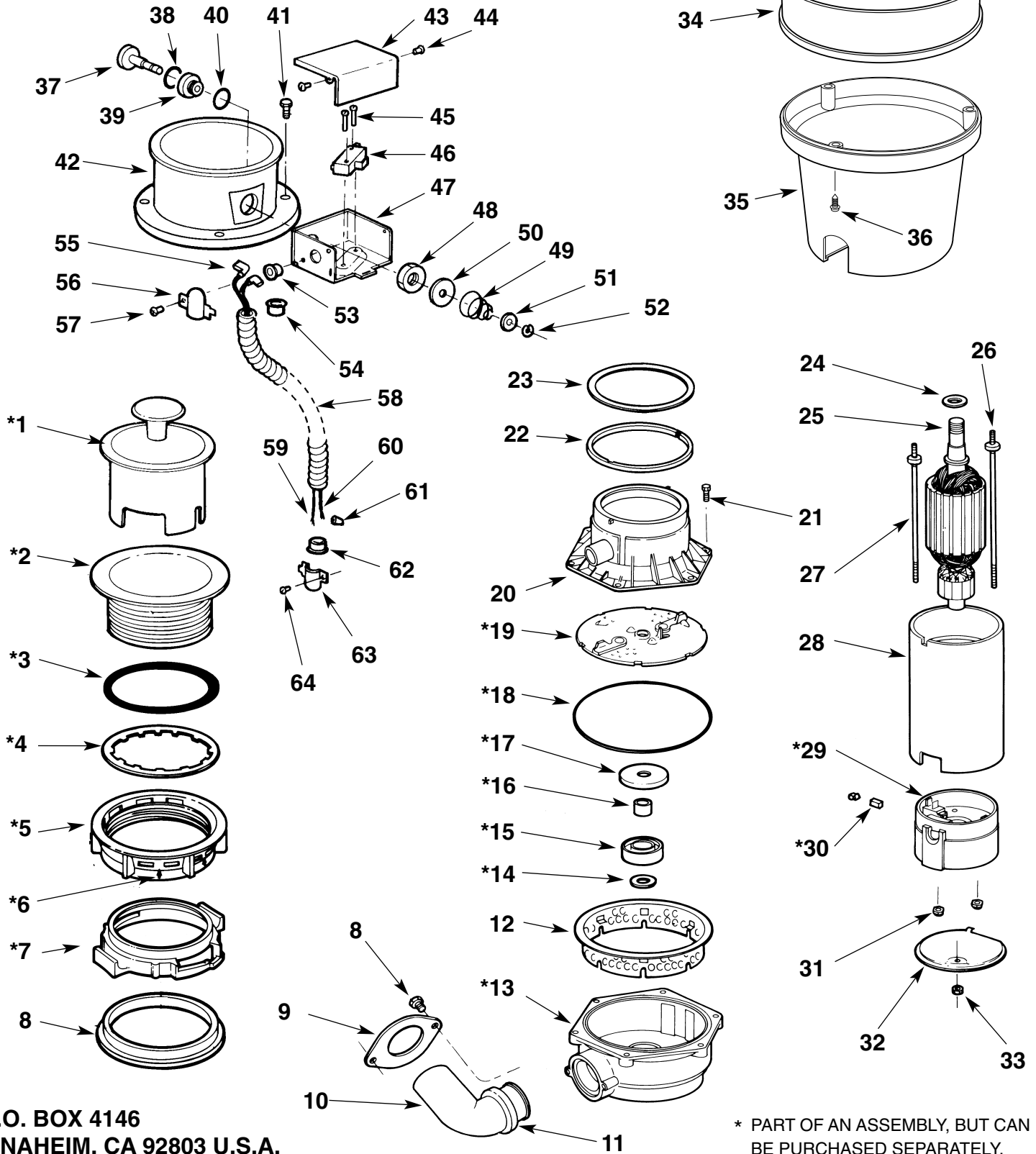


Waste King[®] Gourmet series

by Anaheim Manufacturing

PARTS LIST MODEL SS5000TC



P.O. BOX 4146
ANAHEIM, CA 92803 U.S.A.

* PART OF AN ASSEMBLY, BUT CAN BE PURCHASED SEPARATELY.

MODEL SS5000TC

ITEM #	DESCRIPTION	PART #	QTY	ITEM #	DESCRIPTION	PART #	QTY
	MOUNT ASSEMBLY	.249C019S75	1	33	NUT	.479C021P01	1
*1	STOPPER	.174C066S02	1	34	UPPER SHELL	.806C064P51	1
*2	SINKFLANGE & CAP ASSY.	.249C014S35BF	1	35	LOWER SHELL	.806C065P01	1
*3	RUBBER GASKET	.269C031P01	1	36	SHELL SCREW	.636C024P01	3
*4	FIBER GASKET (WAXED)	.269C033P01	1	37	PLUNGER BUTTON	.106C004P01	1
*5	SUPPORT RING	.614C072P01	1	38	"O" RING	.614C027P01	2
*6	MOUNT RING	.614C059P02	1	39	BUSHING	.102C003P02	1
7	CUSHION MOUNT RING	.469C004P02	1	40	"O" RING	.614C028P01	1
8	OUTLET SCREW	.636C017P03	2	41	SCREW	.636C026P01	4
9	OUTLET FLANGE	.249C009P01	1	42	COLLAR	.154C005P02	1
10	OUTLET ELBOW	.673C015P01	1	43	SWITCH COVER	.174C021P01	1
11	RUBBER OUTLET GASKET	.269C038P01	1	44	SCREW	.636C014P03	3
12	GRIND RING	.614C060P01	1	45	SCREW	.636C019P01	2
	DRAIN HOUSING ASSEMBLY	.311C082S01	1	46	CHERRY SWITCH	.695C003P02	1
*13	DRAIN HOUSING	.311C082P01	1	47	SWITCH BRACKET	.072C001P01	1
*14	THRUST WASHER	.789C041P01	1	48	JAM NUT	.479C010P01	1
*15	WATER SEAL	.645C006P01	1	49	SPRING	.675C001P01	1
*16	SPACER SEAL	.102C005P01	1	50	WASHER	.789C011P01	1
	TURNTABLE ASSEMBLY	.258C032S03	1	51	WASHER	.789C013P01	1
*17	SLINGER	.789C034P03	1	52	RETAINER	.612C007P01	2
*18	O-RING	.645C005P01	1	53	BUSHING	.287C002P01	1
*19	TURNTABLE	.258C032P02	1	54	BUSHING	.102C004P01	2
20	HOPPER ASSEMBLY	.311C070S01	1	55	CONNECTOR FLAG	.711C010P01	2
21	HOPPER SCREW	.636C023P01	4	56	CONDUIT CLAMP	.142C001P01	1
22	ADAPTER	.614C061P02	1	57	SCREW	.636C014P18	1
23	GASKET	.269C014P01	1	58	CONDUIT	.163C003P01	1
24	WASHER	.789C035P02	1	59	LEAD WIRE	.299C008O05	1
25	ARMATURE ASSEMBLY.	.626C035P05	1	60	LEAD WIRE	.299C008P06	1
26	MOTOR STUD	.687C003P03	1	61	SPLICE	.711C009P01	1
27	MOTOR STUD	.687C003P02	1	62	BUSHING	.102C004P01	2
28	MOTOR SHELL ASSEMBLY.	.681C031S14	1	63	CONDUIT CLAMP	.142C002P01	1
	ENDBELL ASSEMBLY	.311C081S81	1	64	SCREW	.636C014P18	1
*29	ENDBELL	.311C081P01	1	†65	SINKFLANGE GASKET (THICK)	.269C032P01	1
*30	MTR. BRUSH & BRUSH SPRING ASSY	.027C029S02	1				
31	NUT	.479C019P01	2				
32	INSPECTION PLATE	.554C032P01	1				

†NOT SHOWN

*PART OF AN ASSEMBLY, BUT CAN BE PURCHASED SEPARATELY.